



# Anarcsi porta

PROJEKT NEVE: SÓSTÓI MÚZEUMFALU FEJLESZTÉSE  
15049 -0294/2 - 0294/48  
HELYRAJZI SZÁMÚ TELKEK

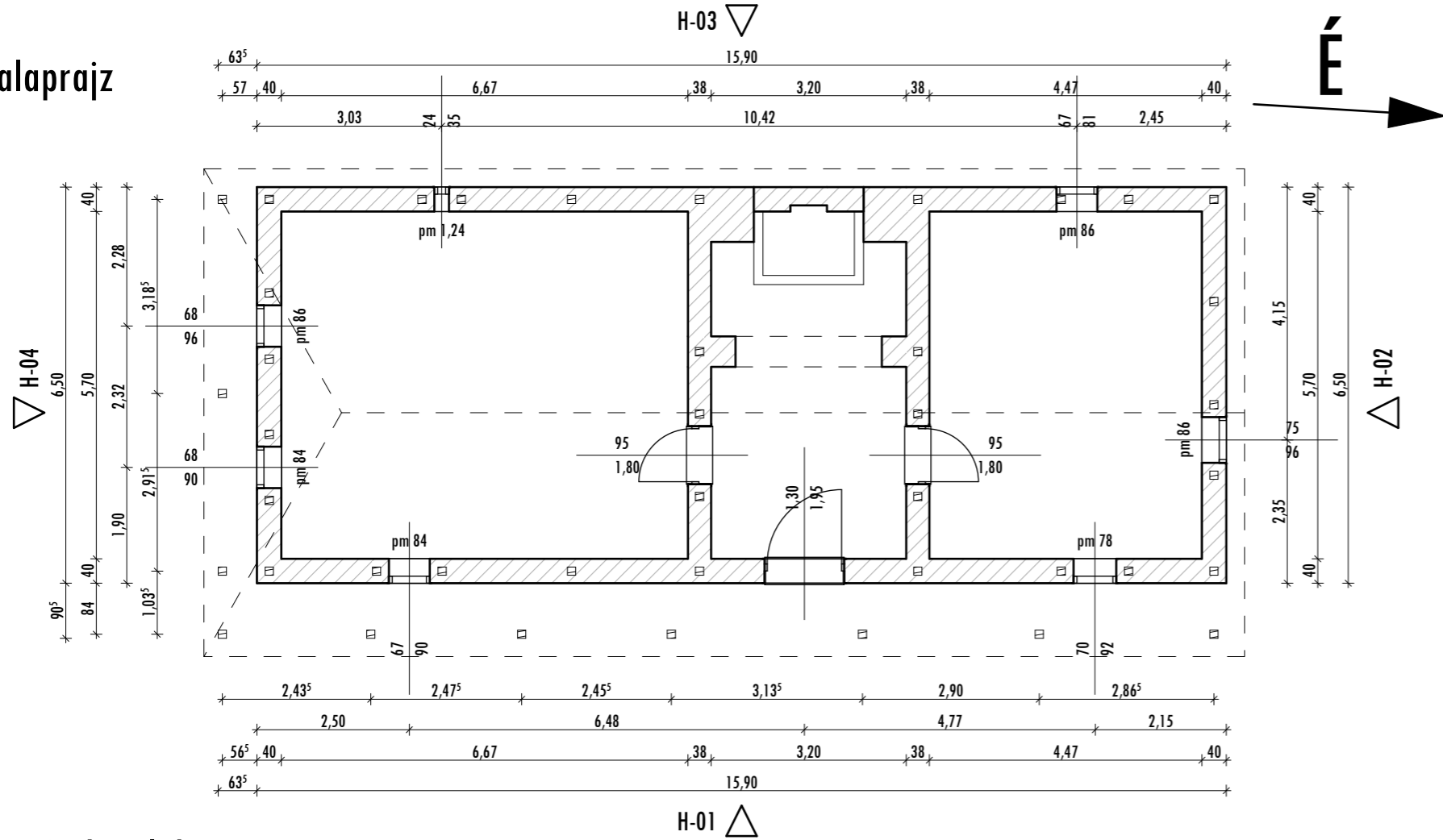
MEGREDELŐ: NYÍREGYHÁZA MEGYEI JOGÚ VÁROS  
ÖNKORMÁNYZATA  
4400 NYÍREGYHÁZA - KOSSUTH TÉR 1.

GENERÁLTERVEZŐ: B5 ÉPÍTÉSZSTÚDIÓ KFT.  
4400 NYÍREGYHÁZA,  
LUTHER TÉR 10.

ÉPÍTÉSZ TERVEZŐ: BALÁZS TIBOR  
PRO-ARCHETCTÚRA DÍJAS ÉPÍTÉSZ  
É-1-15-0003

2017. 01. 20.

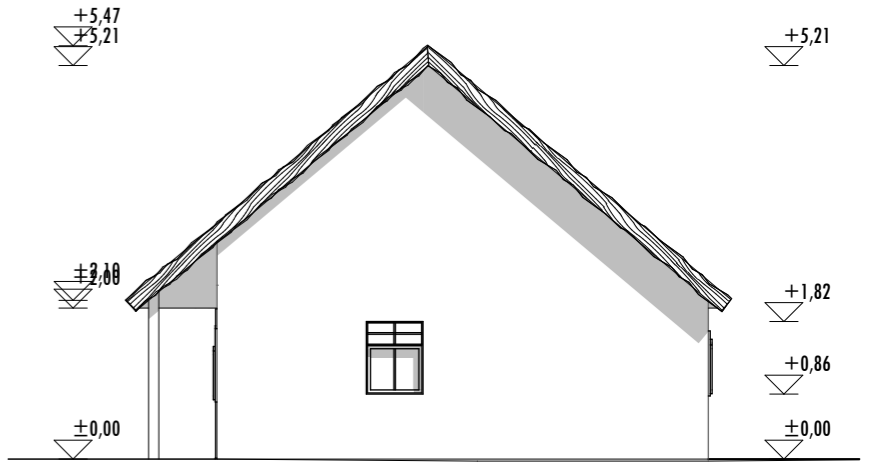
alaprész



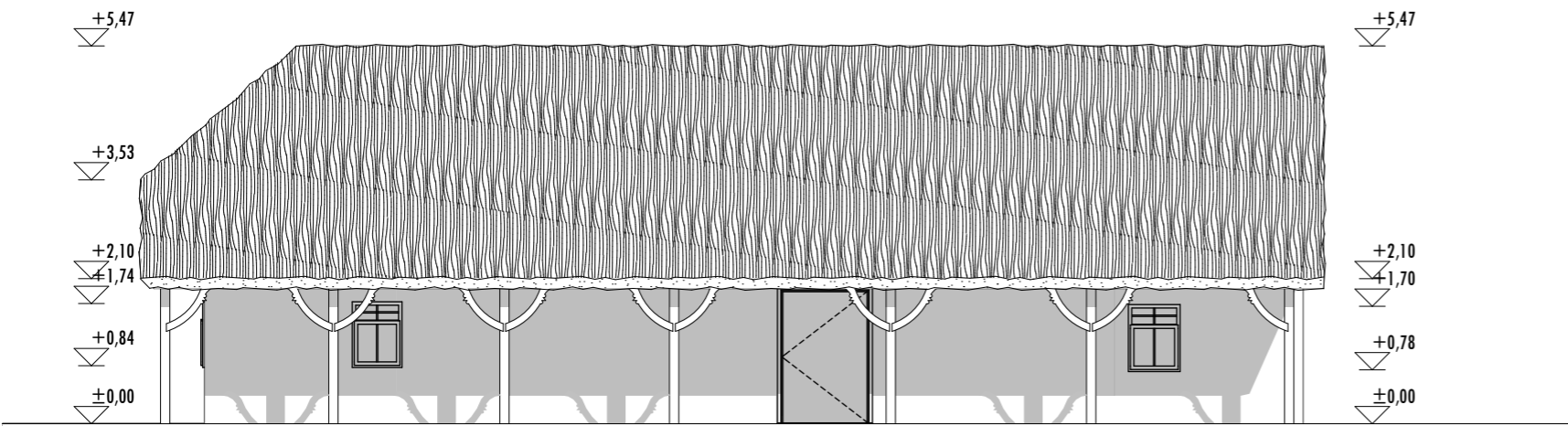
H\_02 homlokzat



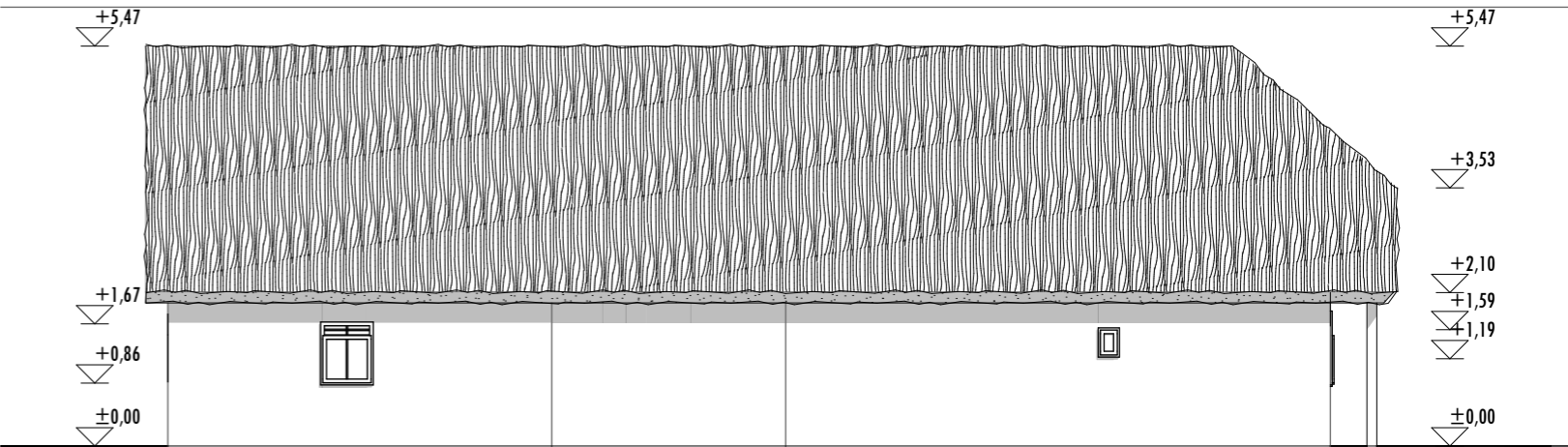
H\_04 homlokzat



H\_01 homlokzat



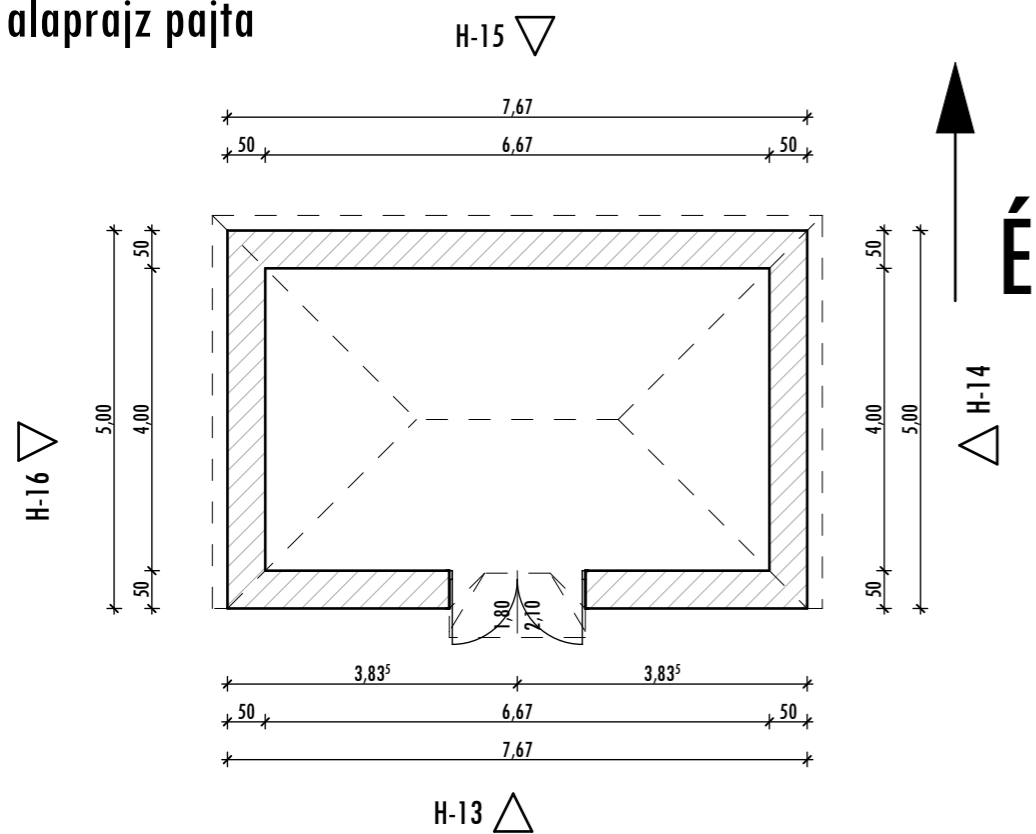
H\_03 homlokzat



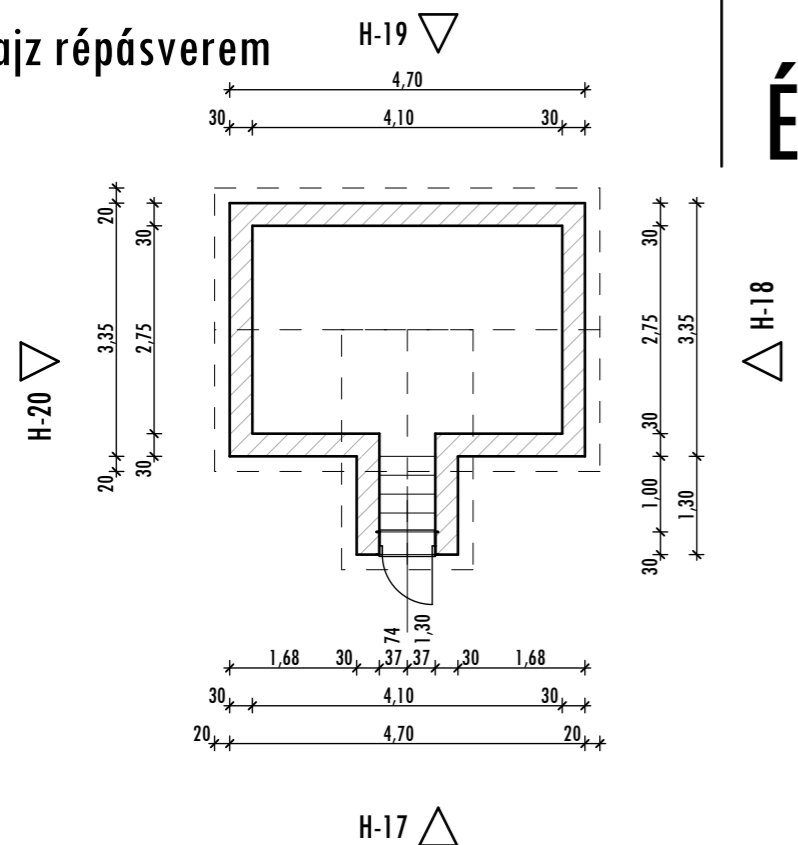
Anarcsi porta

Lakóház, M=1:100

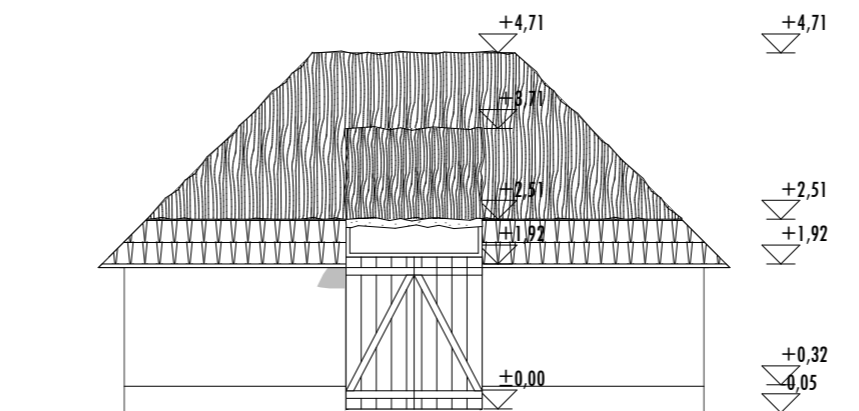
alprajz pajta



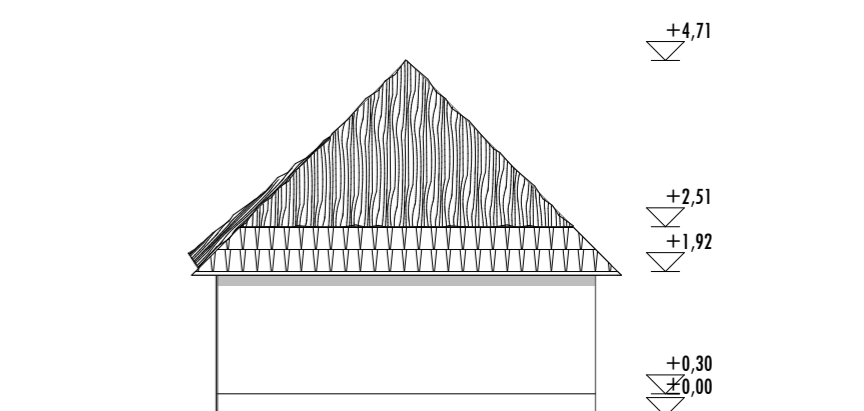
alprajz répásverem



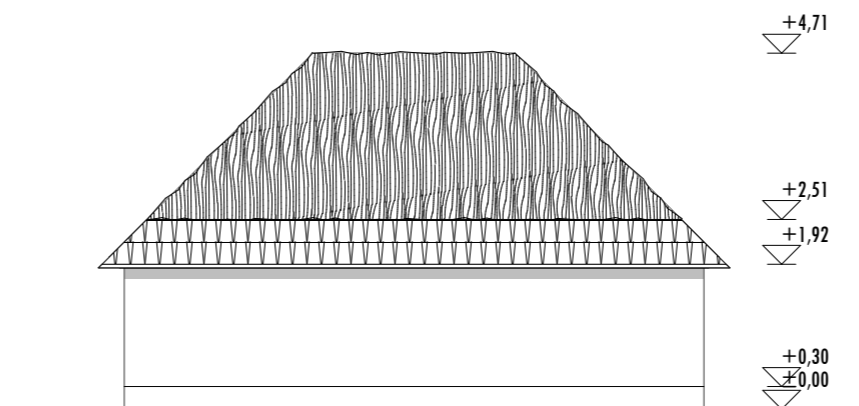
H\_13 homlokzat



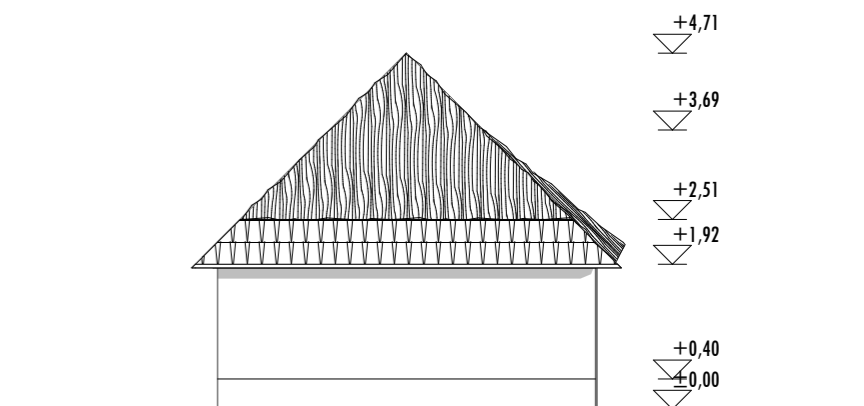
H\_14 homlokzat



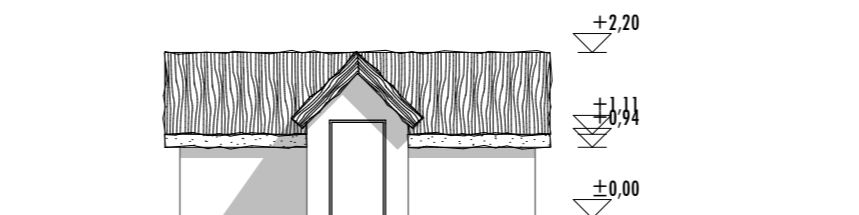
H\_15 homlokzat



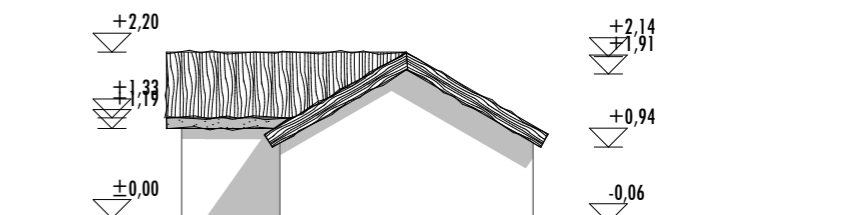
H\_16 homlokzat



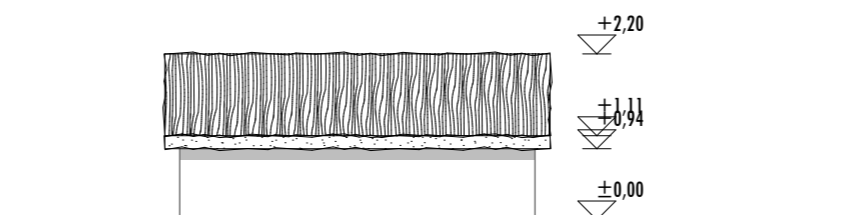
H\_17 homlokzat



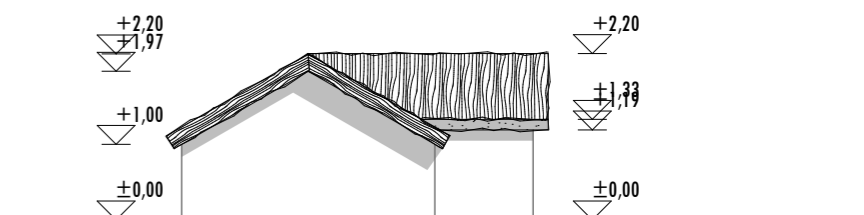
H\_18 homlokzat



H\_19 homlokzat



H\_20 homlokzat



# Anarcsi porta

Pajta, Répásverem M=1:100

# Anarcsi porta

## - Lakóház



## - Répás verem



## - Pajta

