

Jánkmajtisi Porta

PROJEKT NEVE: SÓSTÓI MÚZEUMFALU FEJLESZTÉSE
15049 -0294/2 - 0294/48
HELYRAJZI SZÁMÚ TELKEK

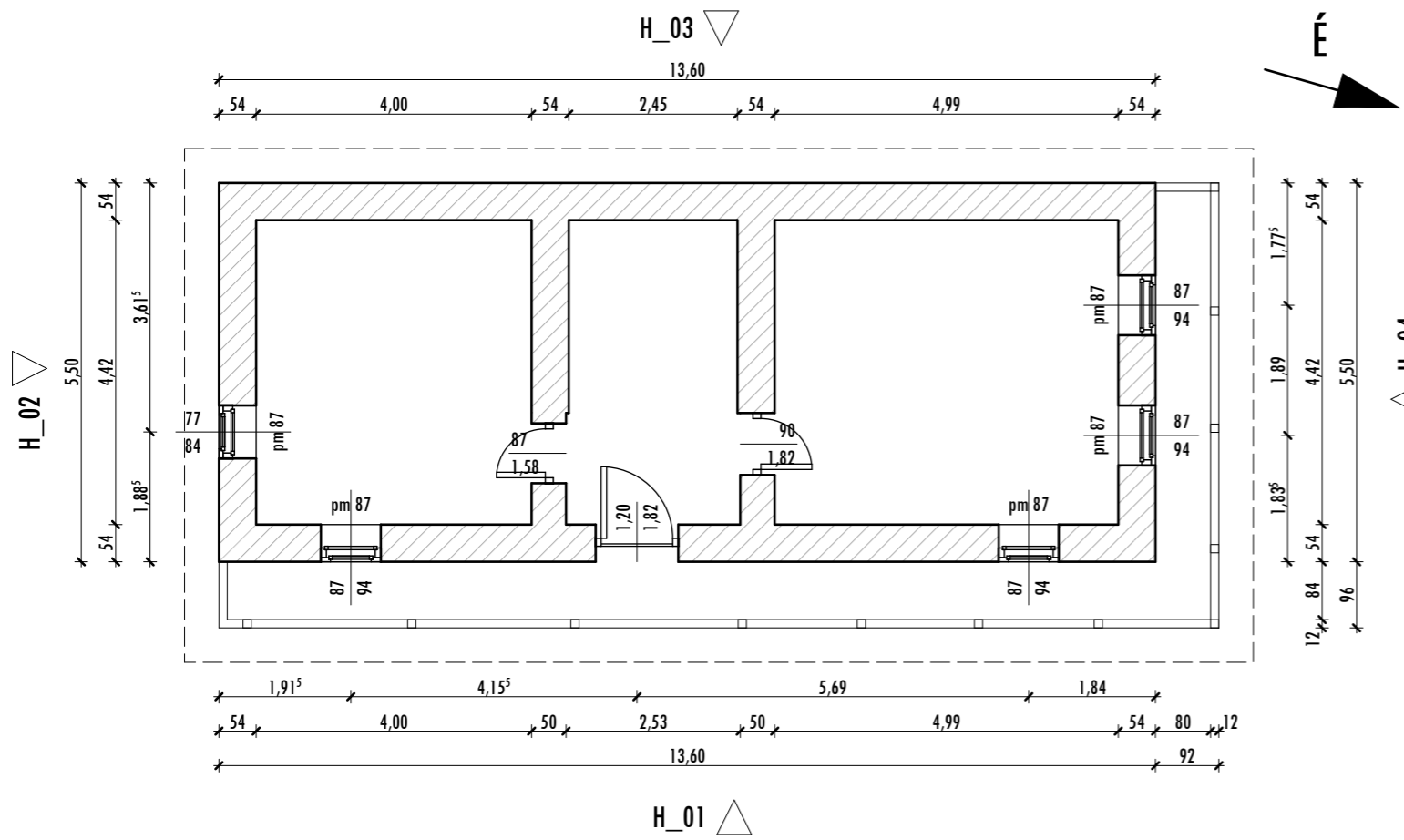
MEGRENDELŐ: NYÍREGYHÁZA MEGYEI JOGÚ VÁROS
ÖNKORMÁNYZATA
4400 NYÍREGYHÁZA - KOSSUTH TÉR 1.

GENERÁLTERVEZŐ: B5 ÉPÍTÉSZSTÚDIÓ KFT.
4400 NYÍREGYHÁZA,
LUTHER TÉR 10.

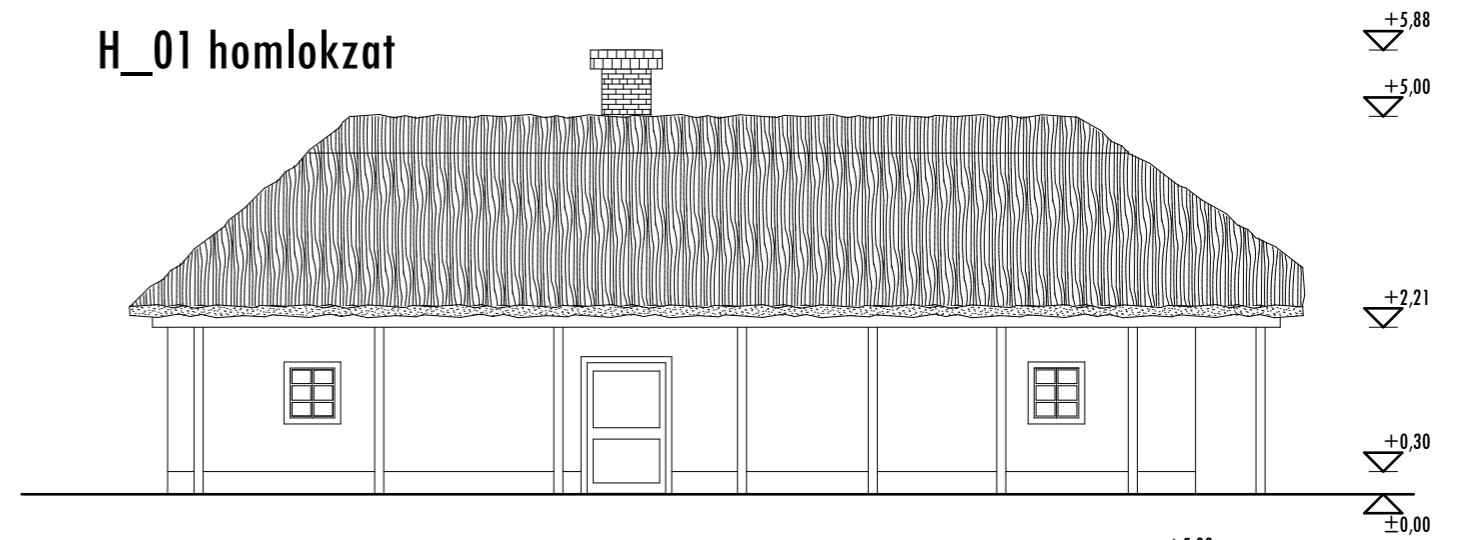
ÉPÍTÉSZ TERVEZŐ: BALÁZS TIBOR
PRO-ARCHETCTÚRA DÍJAS ÉPÍTÉSZ
É-1-15-0003

2017. 01. 20.

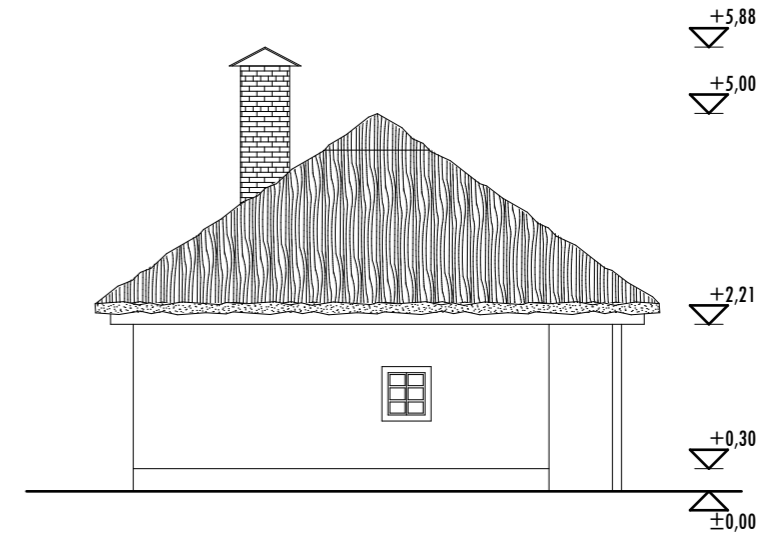
alaprész



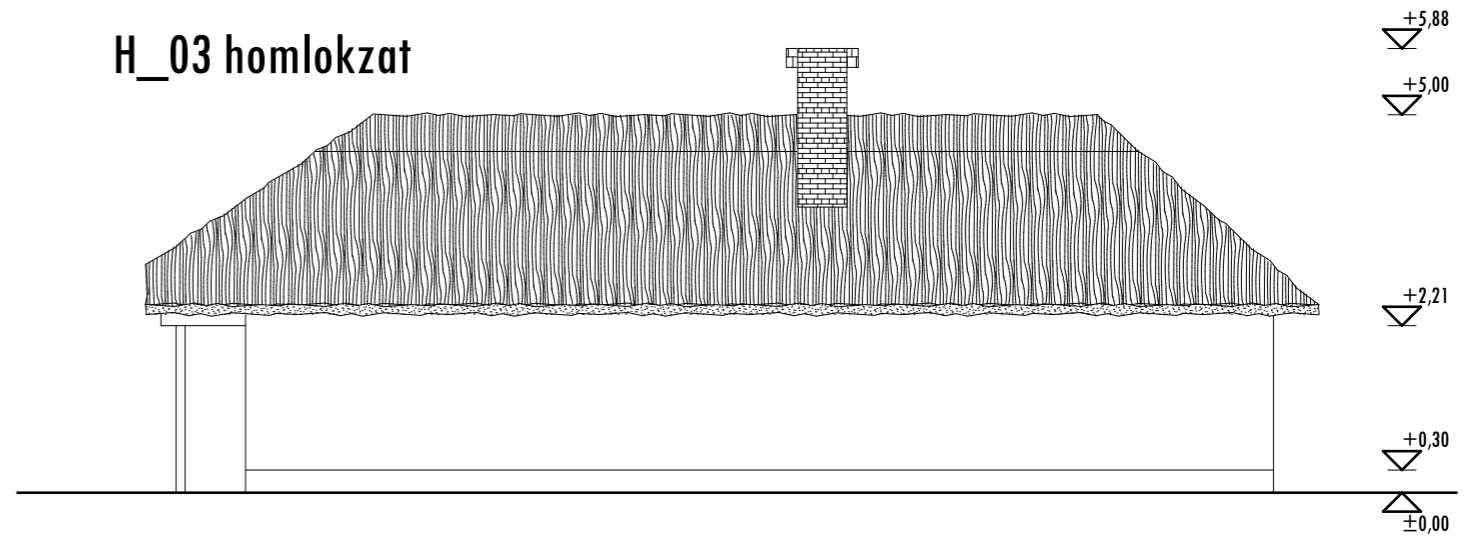
H_01 homlokzat



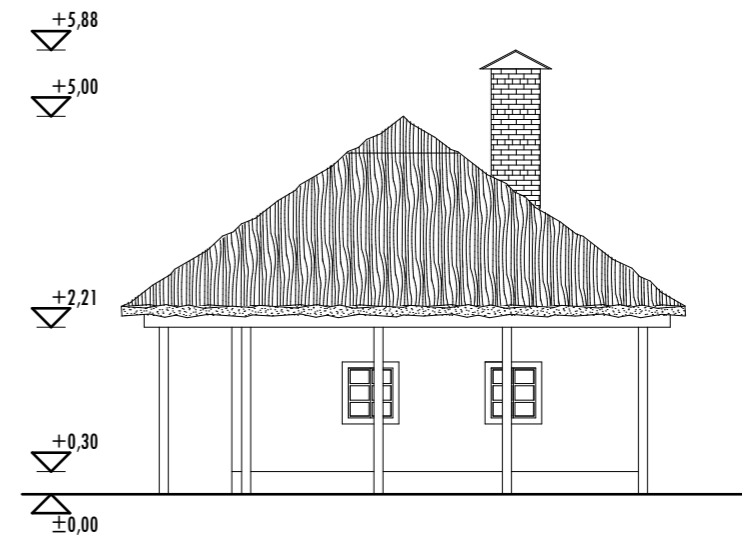
H_02 homlokzat



H_03 homlokzat



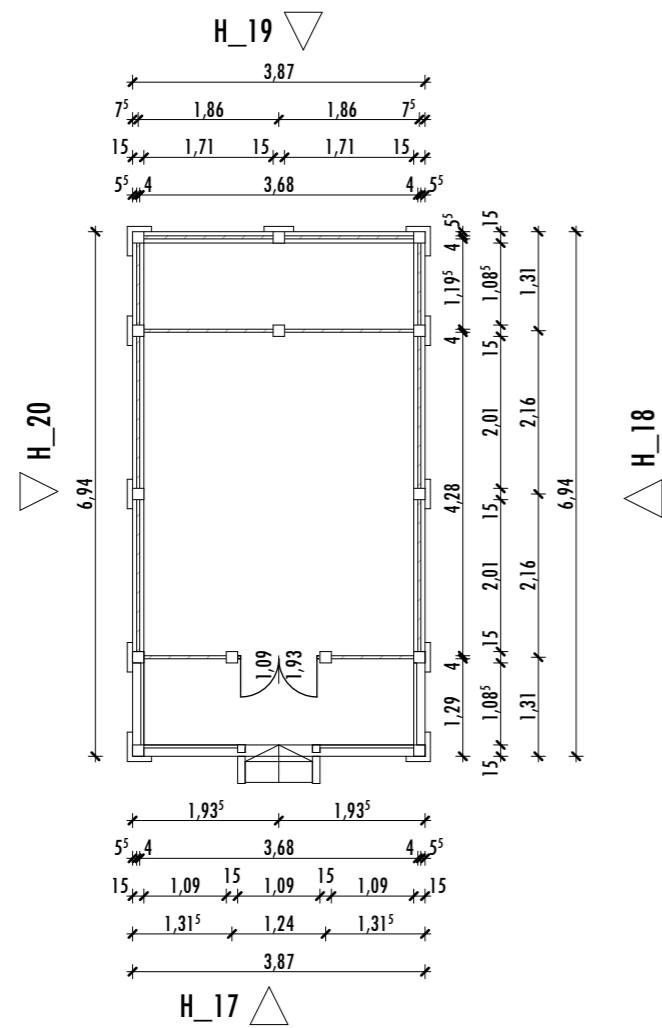
H_04 homlokzat



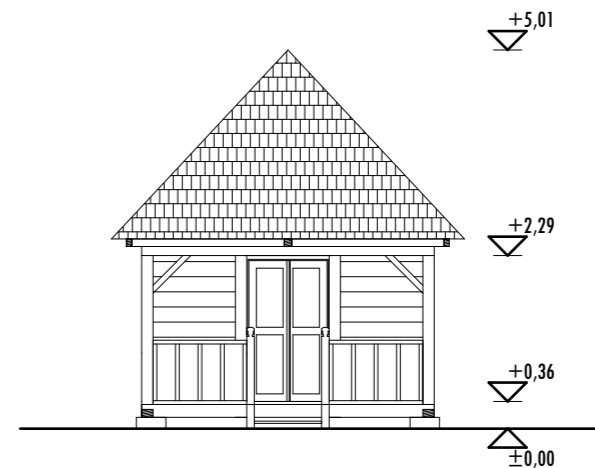
Jánkmajtisi Porta

Lakóház, M=1:100

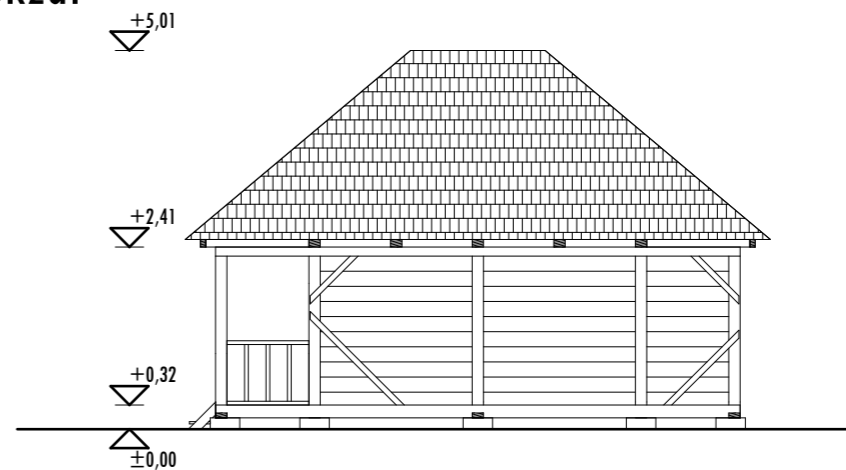
alaprjz



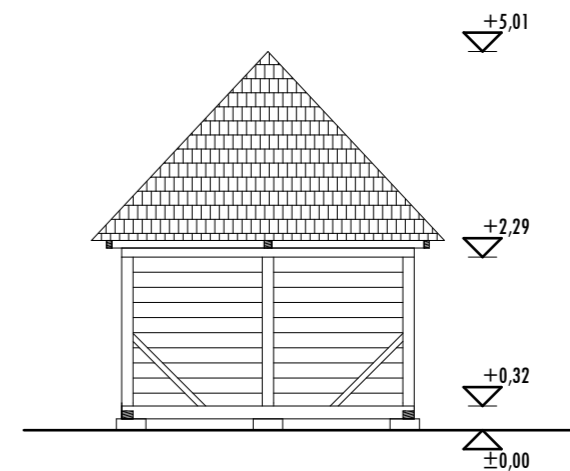
H_17 homlokzat



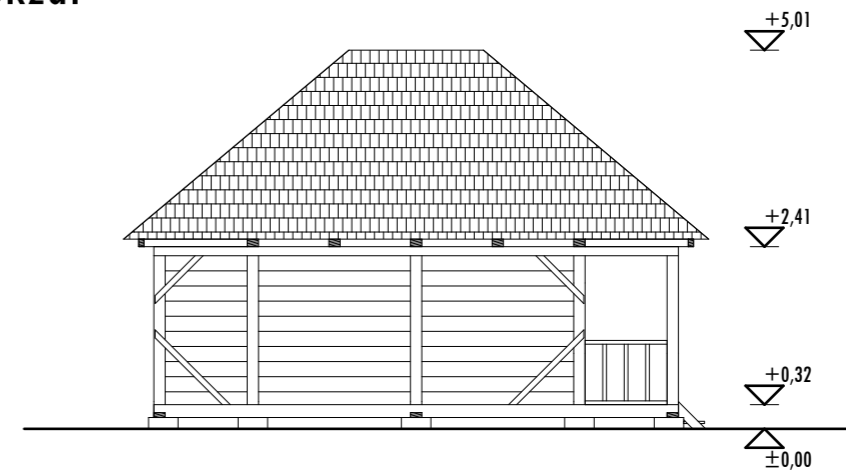
H_18 homlokzat



H_19 homlokzat



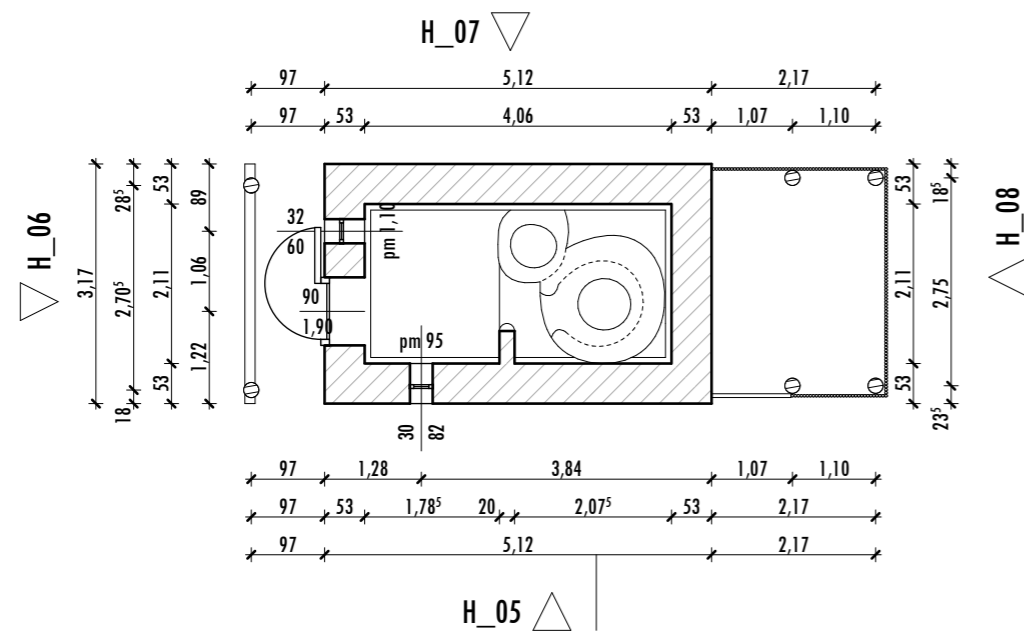
H_20 homlokzat



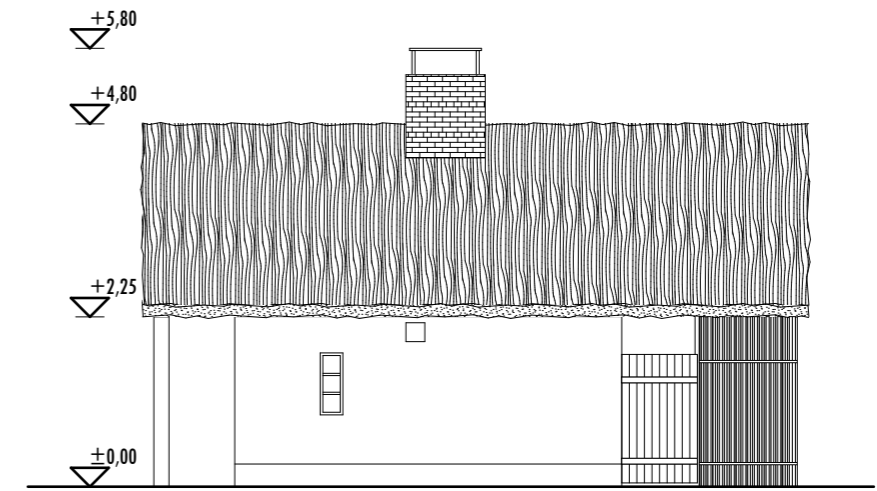
Jánkmajtisi Porta

Magtár, M=1:100

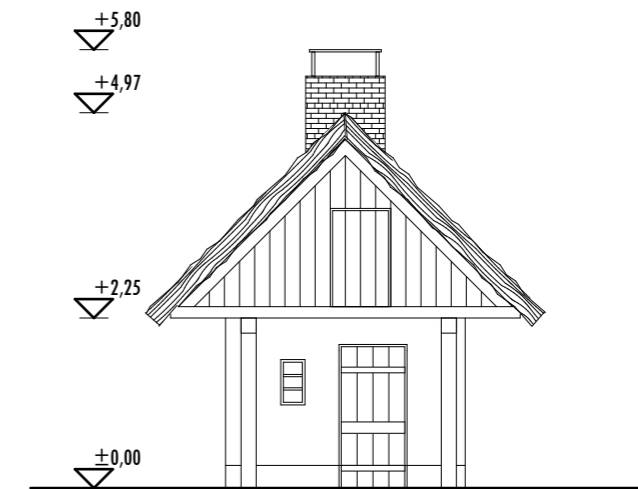
alaprész



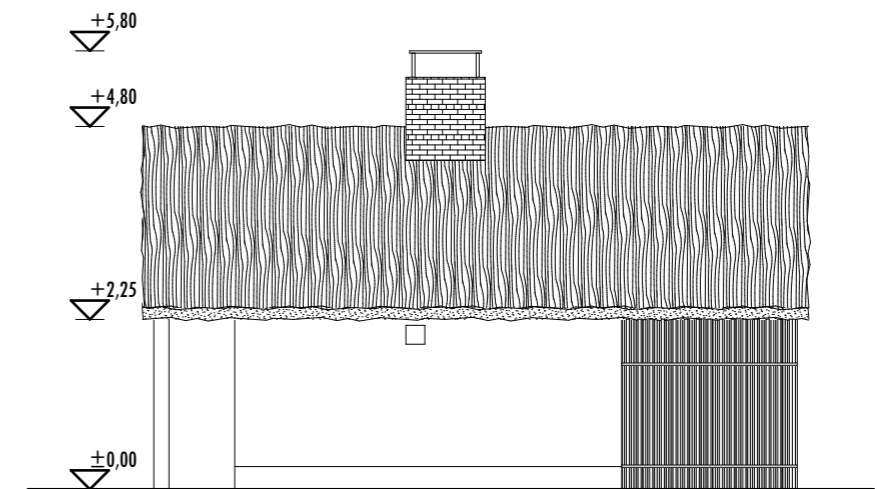
H_05 homlokzat



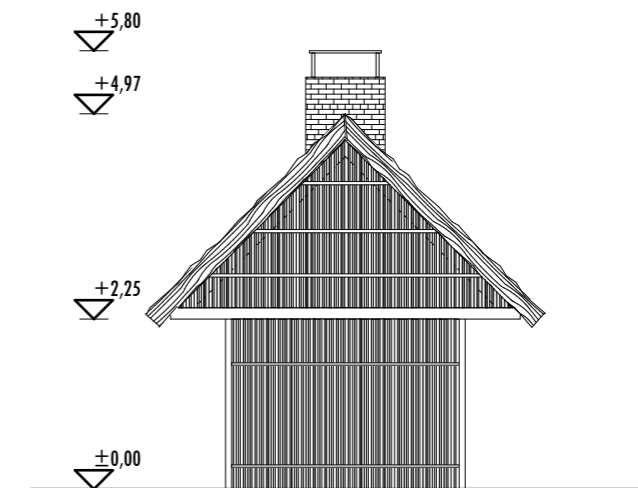
H_06 homlokzat



H_07 homlokzat



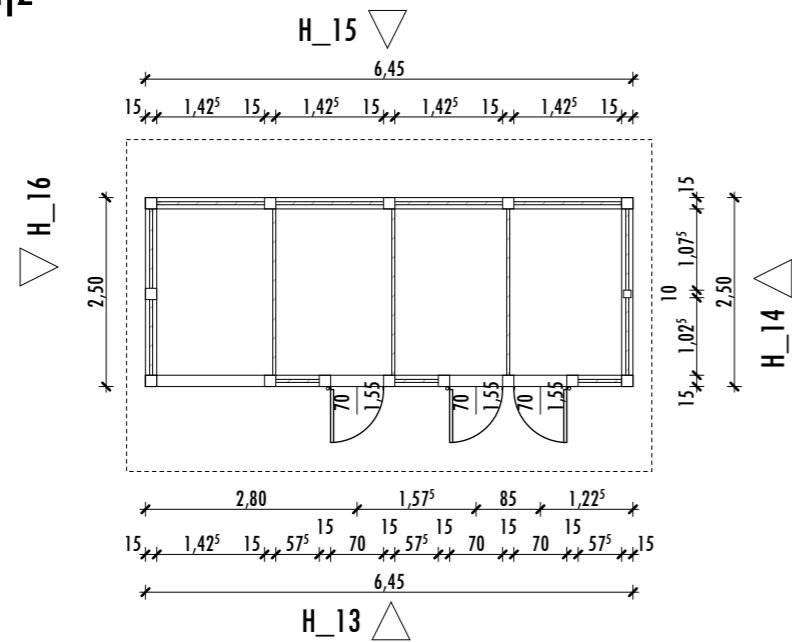
H_08 homlokzat



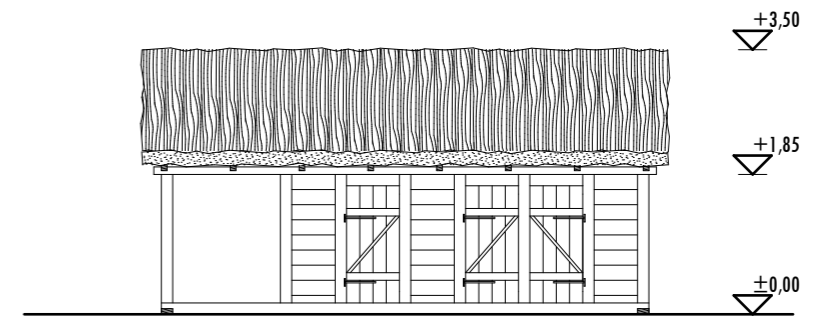
Jánkmajtisi Porta

Sütőház, M=1:100

alaprjz



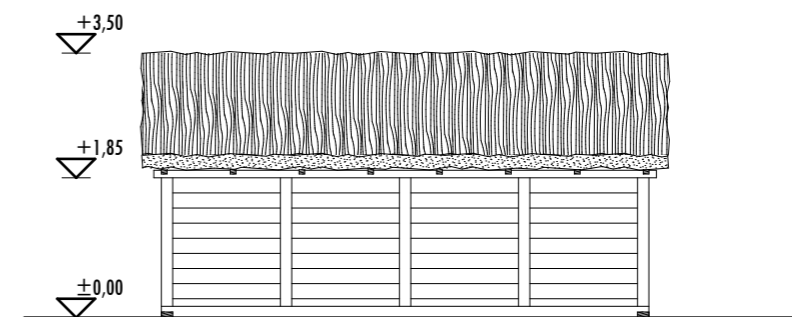
H_13 homlokzat



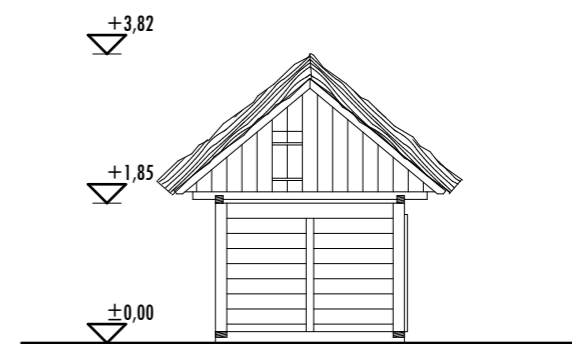
H_14 homlokzat



H_15 homlokzat



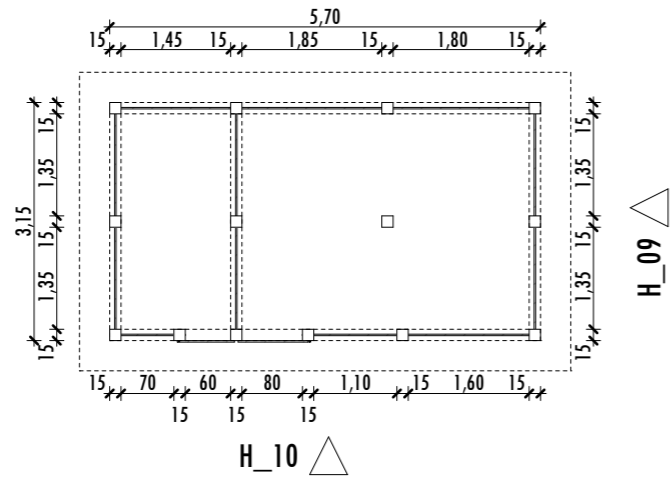
H_16 homlokzat



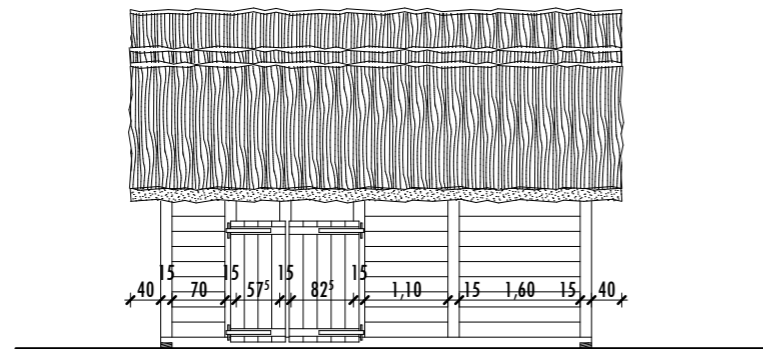
Jánkmajtisi Porta

Disznóól, M=1:100

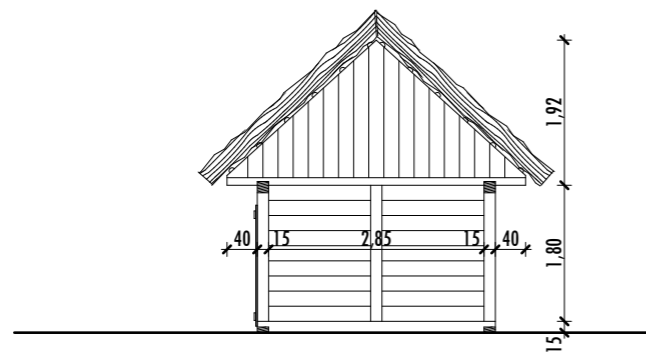
alaprajz



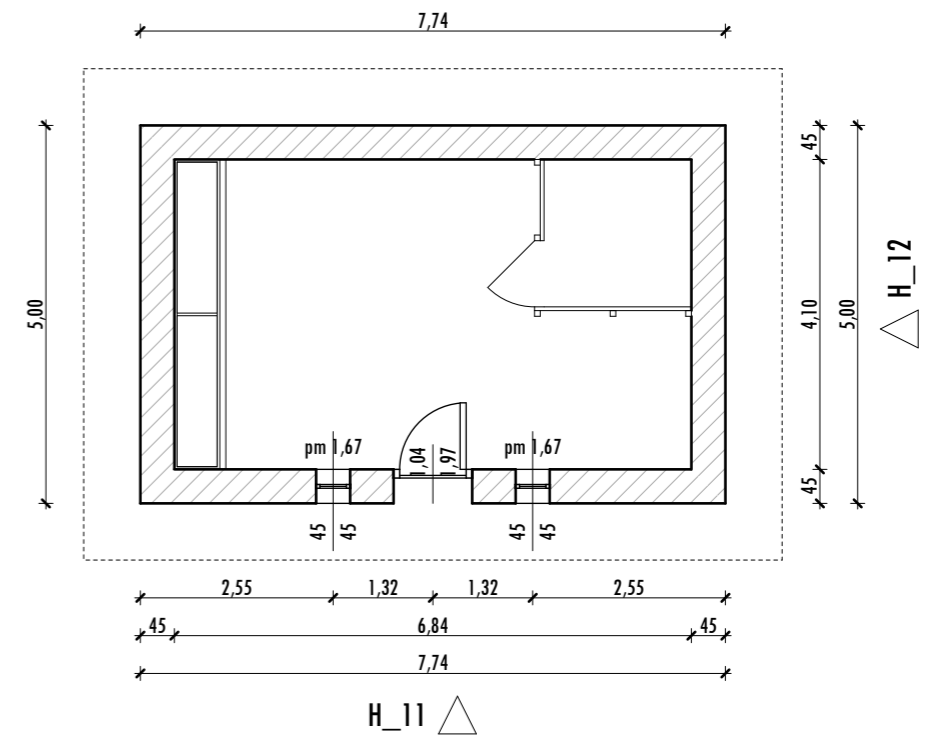
H_10 homlokzat



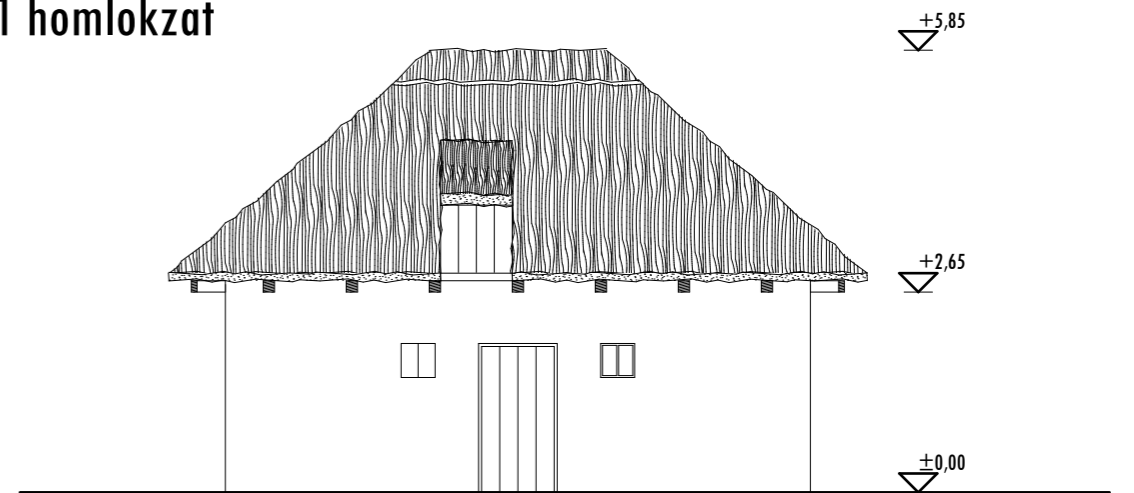
H_09 homlokzat



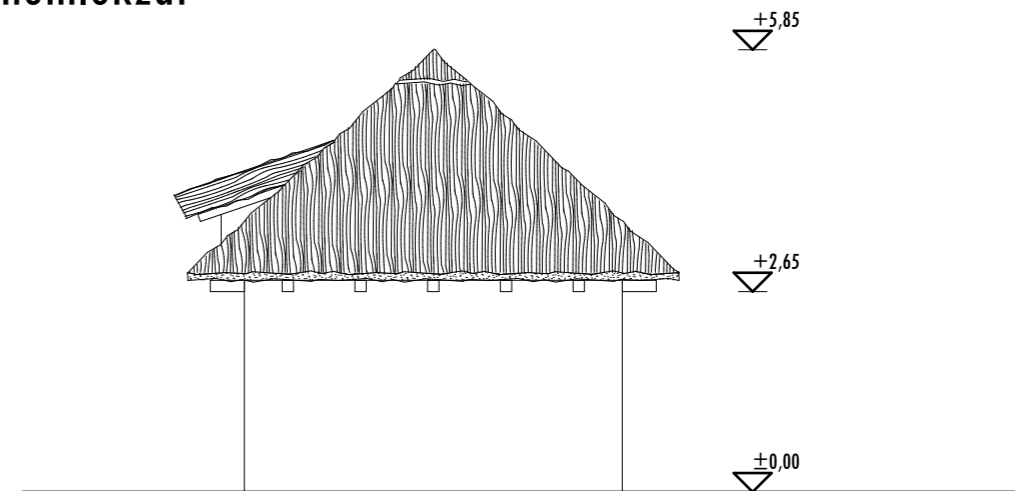
alaprajz



H_11 homlokzat



H_12 homlokzat



Jánkmajtisi Porta

Fáskamra, M=1:100

Jánkmajtisi Porta

Istálló, M=1:100

Jánkmajtisi porta

-Lakóház



-Fáskamra



-Magtár



-Sütőház



-Disznóól



-Istálló

